

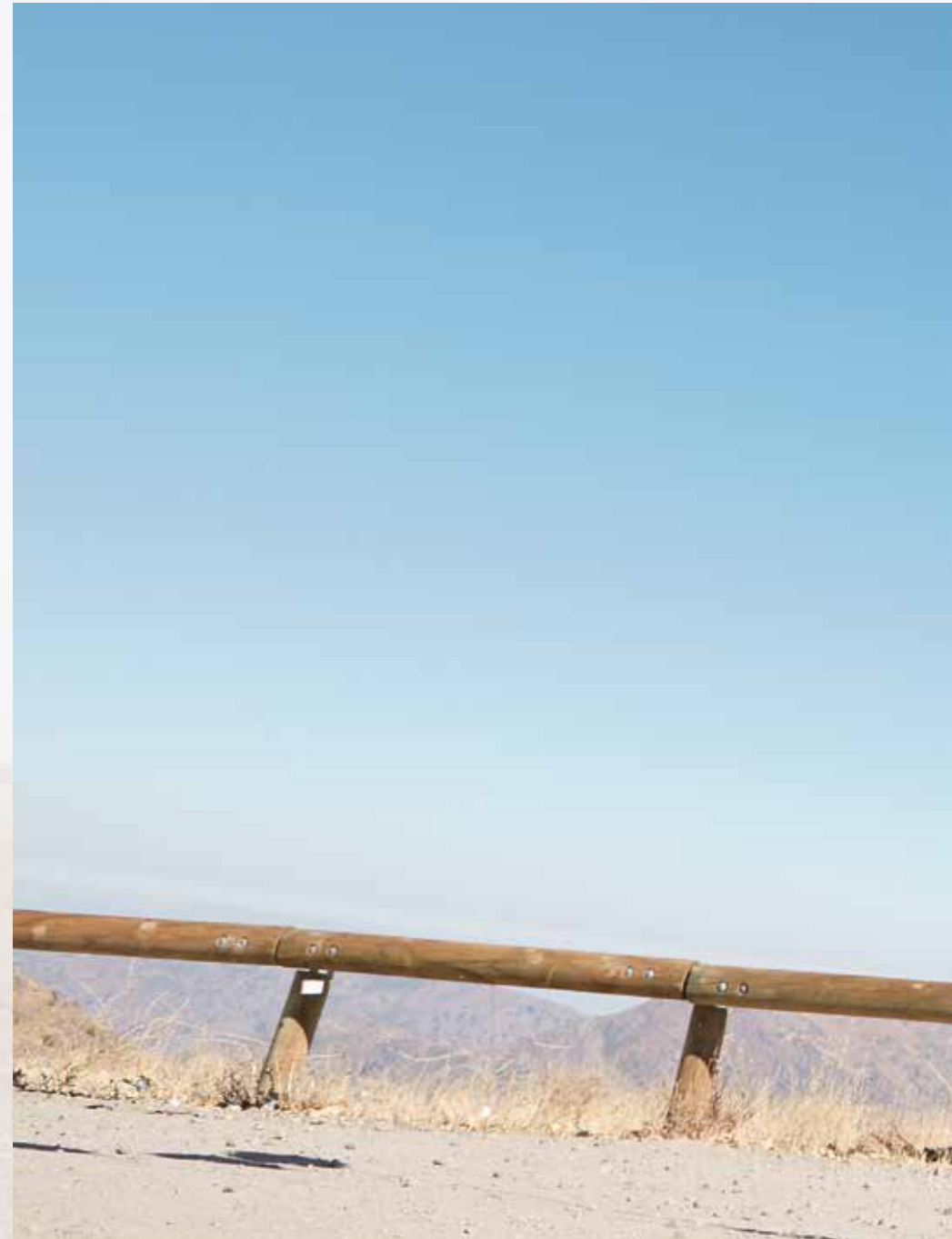
SANTA FE



Make Quality Time.

There is a different car for each kind of family.
And all of them have one name: the All-New Santa Fe.

一個完整家庭，一輛完美汽車。
獨特個性譜出百變功能：全新 Santa Fe





Photos for reference only 圖片只供參考





Celebrate togetherness.

We know that nothing is more important than spending quality time with family and friends. That's why the All-New Santa Fe gives you the comfort and freedom to enjoy those precious moments with your loved ones. Anytime, anywhere.

我們比誰都了解，無可匹敵與家人及朋友共聚的時光。全新 Santa Fe 都可於隨時隨地為你和所愛的人提供一個舒適的環境，令你盡情享受這些珍貴時刻。



The perfect family car.

Family cars don't need to be boring. A wide cascading chrome grille and 19-inch alloy wheels make for the SUV's new unique and bold design. Composite lights also give the car a high-tech allure, ready for family adventures.

家庭車並不一定與個性成反比。全新 Santa Fe 打破框架，以寬闊的電鍍家族式前面罩及 19 吋合金輪圈打造充滿格調的車身外觀，設計新穎大膽，為七人家庭車開展新一頁。另外，組合式頭燈不但提高全車科技感，更令車頭別具氣魄，為每次旅程做最好的準備。



Photos for reference only 圖片只供參考



Radiator Grille / LED Daytime Running Lights (DRL) / LED Headlamps / LED Fog Lamps
家族式面罩 / LED 日間行車燈 (DRL) / LED 頭燈 / LED 霧燈



Roof Rack / Side Garnish
車頂行李架 / 車身裝飾



LED Rear Combination Lamps / LED Rear Fog Lamps
LED 後組合燈 / LED 後霧燈

Load your life with quality time.

Roomy interiors with increased legroom and plenty of space in the trunk offer all the comfort you need for greater moments with your family.

全新的車廂設計，增加了腿部空間，令車廂更寬敞。加上倘大的行李儲存尾箱，設計舒適貼心，讓你與家人共度美好時光。



Best in Class 2nd Row Space
於同級車款中，享有最佳的中排空間





Photos for reference only 圖片只供參考





7 seats
七座位

3rd row folded
後排折疊

3rd row folded and
2nd row folded 40%
將後排折疊
中排四成折疊

3rd row folded and
2nd row folded 60%
後排折疊
中排六成折疊

2nd and
3rd row folded
後排及
中排折疊

No matter the size of your family, or whether you are into picnics, golfing or camping, the 7-passenger Santa Fe offers full flexibility with multiple seat configurations available.

There are multiple configurations possible to fit your needs. With the 2nd and 3rd row folded flat, there's plenty of cargo space to load up on quality time with.

無論你擁有一個大家庭或小家庭；準備出發打高爾夫球或露營，Santa Fe 車廂內多種座椅編排的靈活變化，均可滿足你不同場合的需求。將中排和最後一排折平，瞬間為你提供一個特大的載物空間，為你的旅程加添一份驚喜。



One-Touch Folding

The one-touch folding feature allows you to fold the 2nd row seat easily by the push of a button.

一按式折疊

只需按一下按鈕，讓您輕鬆折疊中排座椅。



Walk-in Handle

Climb into the car easily by gripping the rear seat walk-in handle located on the inside of the car.

門邊把手

中排座位旁邊設有把手，讓你輕鬆安全進入車的最後排。

Packed with features. Ready for stories.

With the features inside the car, you will never again miss an important family moment. The Wireless Smartphone Charging System lets you charge your phone with ease.

車內完善的設備令你不再錯過每個重要的家庭時刻。智能手機無線充電系統讓你隨時輕鬆為手機充電。



Head-Up Display (HUD)
抬頭顯示器



Wireless Smartphone Charging System
手機無線充電功能



Integrated Memory System (IMS)
記憶座椅



Photos for reference only 圖片只供參考





Photos for reference only 圖片只供參考

Calm inside. No matter what's on the outside.

Our calm technology includes a number of safety features such as the Rear Occupant Alert, keeping your loved ones safe and leaving you free to focus on what's important.

我們的汽車技術新增了同級首創的安全功能——後座提示系統，為了時刻確保您身邊每一位，能夠享受一趟安全的旅程。



Rear Occupant Alert (First in class)

The Rear Occupant Alert detects movement in the rear seats and reminds the driver there are rear occupants with an alert on the cluster. If the system detects movement after the driver has left the car and locked it, it sets off a sound alarm.

後座提示系統 (同級首創)

後座乘客提示系統，可透過超聲波檢測到後排座椅的狀況，並作出相對應的提示。如車輛上鎖後，系統檢測到第二及三排座椅有生物移動的情況，車輛便會響咁提示。



Photos for reference only 圖片只供參考



Take care of your loved ones 24/7.



Advanced High Strength Steel (AHSS)

With the extensive use of additional hot stamping materials and Advanced High Strength Steel (AHSS) plates, the average tensile strength and skeletal rigidity of the car body has been improved by 15% and 17% respectively, providing a highly stable and quiet drive at once.

高剛性鋼材 (AHSS)

車架採用高剛性鋼材(AHSS)，分別把車身的平均抗拉度和車架剛度提高了15%和17%，令車架更安全的同時，亦大幅提高車身穩定度及車廂寧靜感。

6-airbag System

A 6-airbag system with front & side airbags and curtain airbags offers broad collision protection. Advanced frontal airbags determine when and how to deploy pressure in an accident by sensing occupant's position, seat belt use and the severity of the crash.

六安全氣袋系統

全車設有正面、側面和窗簾式安全氣袋，提供全面的撞擊保護。智能化的正面安全氣袋可按乘客的位置、安全帶的拉力及撞擊的嚴重程度，決定氣袋彈出的時間和壓力。

Hyundai SmartSense

With Hyundai SmartSense, our cutting-edge Advanced Driver Assistance Systems, the Santa Fe comes with the latest active safety technology – built to provide you with more safety and peace of mind.

Santa Fe 配備了全新主動式安全技術，透過先進的 SmartSense 駕駛輔助系統，為您進一步提升行車安全性。



Lane Keeping Assist (LKA)

A front view camera detects lane markers and road edges helping prevent unintentional lane departures. When the vehicle strays from its lane (or road), the system sets off a visual and sound alarm and automatically steer the vehicle to prevent it from moving out of its lane (or road).

* Lane Departure Warning (LDW) function is included in this feature.

車道保持輔助系統 (LKA)

透過前鏡頭檢測行車線，協助防止車輛偏離行車線。當出現偏離行車線的狀況時，系統會發出警示，並自動輔助車輛返回行車線，以防止意外發生。

*車道偏離提示系統 (LDW) 已包含於此功能內。



Forward Collision-Avoidance Assist (FCA) – Sensor Fusion Type

Front view camera and front radar are in place to warn the driver of imminent collisions with other vehicles, or even certain types of objects; and if necessary apply emergency braking to prevent from collision.

* Forward Collision Warning (FCW) is included in this feature. * FCA - Camera Type only detects vehicles.

自動緊急煞車系統 (FCA)

利用前鏡頭和雷達，於安全距離下提示駕駛者前方車輛或物件；並在必要時進行緊急煞車以防止碰撞。

*前方碰撞提示 (FCW) 已包含於此功能內

*自動緊急煞車系統——前鏡頭只偵測車輛



Smart Cruise Control with Stop & Go (SCC w / S&G)

This system will maintain the driver's pre-set speed and distance from the vehicle ahead without requiring the driver to use the accelerator or brake pedals.

智能定速巡航功能

系統記錄及預設駕駛者的行車速度，亦可自動保持與前車的距離，或停或行，均無需由駕駛者使用油門或制動控制。



Driver Attention Warning (DAW)

This system recognizes signs of driver's fatigue and issues and alert advising the driver to take a break.

疲勞提示系統

系統能識別駕駛者的疲勞跡象，並於儀表板提示駕駛者需要休息。



Surround View Monitor (SVM)

A multi-camera system provides a 360-degree view around the vehicle to assist the driver in parking situations.

360 度環視鏡頭

多鏡頭系統為您提供一個360度的視野，協助駕駛者更容易進出車位。

A family car. With just as much energy.

To endure road trip after road trip, the Santa Fe comes in gasoline engine with 6-speed transmission offering maximum fuel efficiency and durability.

全新 Santa Fe 配備 2.4 公升汽油引擎及六前速自動波箱，
為你提供最高的燃油效率和波箱耐用性。



6-speed Automatic Transmission
六前速自動波箱

2.4 GDi Gasoline Engine 汽油引擎

185 Maximum Power 最大馬力
ps/6,000 rpm

24.3 Maximum Torque 最大扭力
kg-m/4,000 rpm





Photos for reference only 圖片只供參考



The Santa Fe is the first SUV with HTRAC technology, allowing you to choose the ideal driving mode for your road adventures. City or crosscountry driving, with the HTRAC technology you will always have the power to go further on the road.

全新 Santa Fe 是現代汽車首個四輪驅動車款採用 HTRAC 技術，你可選擇最合適自己的駕駛模式。無論城市或村野，HTRAC 技術令所有旅程都盡在掌控之中。

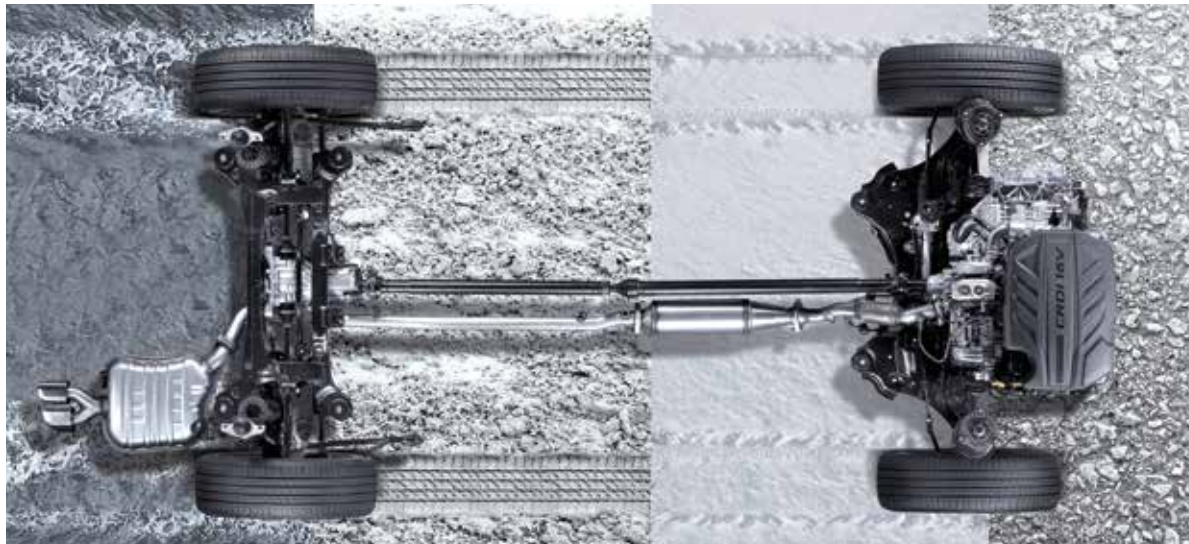


HTRAC All-Wheel Drive

HTRAC is an electronic all-wheel drive system that automatically detects vehicle's speed and road conditions to control braking between the left and right wheels and apply active torque control between the front and rear axles, in order to ensure stability while driving and cornering on slippery roads.

HTRAC 四輪驅動

HTRAC是一套電子四驅系統，可自動監測車輛的速度和路面情況，而控制左右輪的制動，並在前後軸之間施加主動扭矩控制，以確保在濕滑道路上和轉彎時的穩定性。



Driving Mode

The color of the instrument panel changes according to the driving mode selected (Comfort, ECO, or Sport). Comfort mode provides optimized torque transfer for a stable driving, ECO mode prioritizes fuel economy, while Sport mode boost performance to deliver a dynamic drive. Finally, use the Smart mode to automatically switch among the other modes based on road conditions and driving style.

駕駛模式

儀表板的顏色會根據所選的駕駛模式而變化 (COMFORT·ECO·SPORT或SMART)。COMFORT模式，提供最理想的動力傳遞；ECO模式，優先考慮節省燃油；SPORT模式，提升車款性能，採用動態駕駛；SMART模式，根據道路情況和駕駛風格，而自動切換至不同模式。



Photos for reference only 圖片只供參考

Features 設備



18" Alloy Wheels
18吋合金輪圈



19" Alloy Wheels
19吋合金輪圈



Radiator Grille
家族式前面罩



LED Daytime Running Lights (DRL)
LED 日間行車燈



LED Headlamps
LED 頭燈



LED Rear Combination Lamps
LED 尾組合燈



LED Outside Mirror Repeaters
LED 側鏡指示燈



Outdoor Handles
電鍍門柄



Safety Power Window
安全電動門窗



Panorama Sunroof
天幕天窗



Power Tailgate
智能尾門系統

Features 設備



7" TFT LCD Cluster
7吋LCD儀表板



7" Infotainment System
7吋資訊娛樂系統



Full Auto Air Conditioning System
自動恆溫空調系統



Electric Parking Brake (EPB)
電子手制



Front Seat Warming & Cooling Air Ventilation
前座冷暖座椅



Driver's 14-way Power Seat
司機席14向電動調控



Rear Door Manual Curtain
中排手動太陽簾

Photos for reference only 圖片只供參考

Interior colors 內櫥顏色



Black One-tone Interior 黑色內櫥



皮革
Leather + Quilting



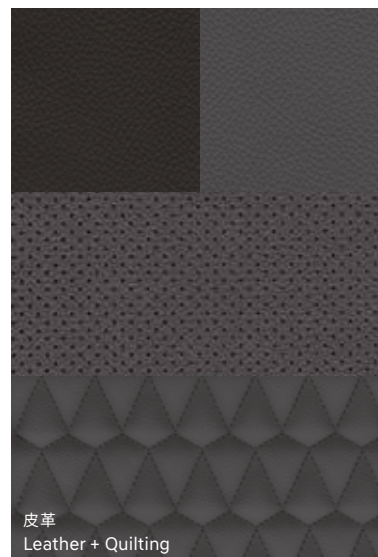
頂篷: 紡織物料
Headliner: Melange Knit



裝飾
Garnish: Tactile Metallic Pattern



Gray Two-tone Interior 灰色雙色內櫥



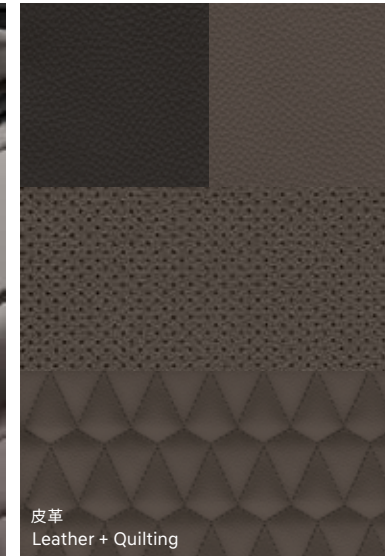
皮革
Leather + Quilting



頂篷: 紡織物料
Headliner: Melange Knit



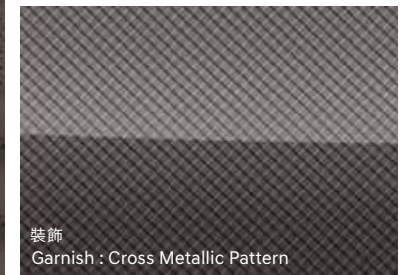
裝飾
Garnish: Tactile Gray Stone



皮革
Leather + Quilting

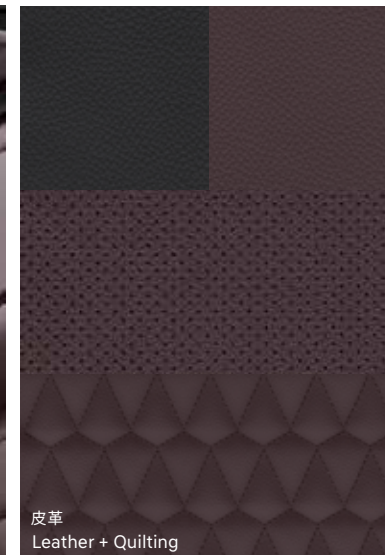


頂篷: 紡織物料
Headliner: Melange Knit



裝飾
Garnish: Cross Metallic Pattern

Dark Beige Two-tone Interior 深棕色雙色內樞



皮革
Leather + Quilting



頂篷: 絨毛
Headliner: Suede

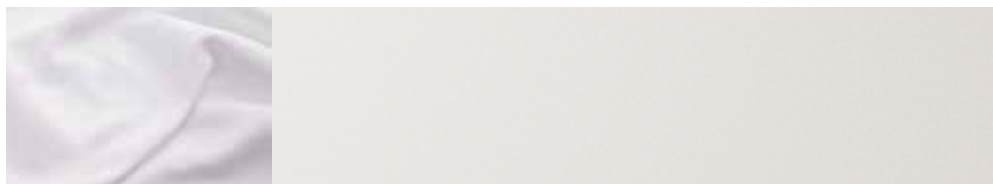


裝飾
Garnish: Engineered Wood

Burgundy Color Package Interior 酒紅色雙色內樞

Photos for reference only 圖片只供參考

Exterior colors 車身顏色



White Cream (WW2)



Earthy Bronze (Y2B)



Typhoon Silver (T2X)



Lava Orange (YR2)



Wild Explorer (W2P)



Rain Forest (R2F)



Magnetic Force (M2F)



Stormy Sea (ST2)



Phantom Black (NKA)

Specifications 規格

Type 類型	2.4 GDi Gasoline Engine 汽油引擎
Engine type 引擎類型	4-Cylinders DOHC 4 氣缸雙頂凸輪軸
Displacement (cc) 排氣量	2,359
Max. Power (ps / rpm) 最大馬力	185 / 6,000
Max. Torque (kg·m / rpm) 最大扭力	24.3 / 4,000
Brakes 制動	
Front 前	Ventilated Disc 通風碟
Rear 後	Ventilated Disc 通風碟
Suspension 懸掛	
Front 前	McPherson Strut Type 麥花臣式
Rear 後	Multi-Link Type 多連桿式
Tire 輪胎	
	235/60 R18, 235/55 R19



Overall Width 全闊 1,890



Overall Length 全長 4,770
Wheel Base 軸距 2,765

Overall Height 全高
(Including roof rack)
(連車頂架)

1,680 (1,705)



Unit 單位 : mm

Photos for reference only 圖片只供參考

**For every kind of family.
Especially yours.**





Photos for reference only 圖片只供參考

Showroom 陳列室

G/F, 4D Nan Fung Commercial Centre, 19 Lam Lok Street, Kowloon Bay, Kowloon
九龍九龍灣臨樂街19號南豐商業中心地下4D
Telephone 查詢電話: 3428 8288

Service Centre 維修中心

Kwai Chung 葵涌
1/F, 26-30 Wo Yi Hop Road, Kwai Chung, N.T.
新界葵涌和宜合道26-30號1樓
Telephone 查詢電話: 3421 0640

Tin Shui Wai 天水圍

DD124 & 127 Kiu Tau Wai, Kiu Cheong Road, Tin Shui Wai, Yuen Long, N.T. (Entrance at Kiu Cheong Road)
新界元朗天水圍橋昌路橋頭圍 DD124 & 127 (橋昌路入)
Telephone 查詢電話: 3105 3828

- Hyundai Motor Company and Hyundai Hong Kong Co. Limited reserve the rights to change specifications and equipment without prior notice.
- Some of the equipment illustrated in this catalogue may not be supplied as standard equipment.
- The color plates shown may vary slightly from the actual colours due to limitations of the printing process. Please consult your dealer for full information and availability on colours and trims.
- 5-year unlimited mileage factory warranty.

- 本公司保留改變規格及設備的最終權利，恕不另行通知。
- 本小冊子內容部份設備或非標準配備。
- 基於印刷過程的限制，本小冊子所顯示的顏色與實物顏色或稍有偏差。請向零售商索取內飾和顏色的詳盡資料。
- 原廠保用為五年無限里數。