

# H-1





## New experience, new opportunities 新體驗，新機遇



The H-1 opens a new world for you to experience. All-new design headlamp and grille enhance overall presence.  
H-1 帶來新的體驗，全新設計頭燈及水箱罩令氣勢昇華。



16" alloy wheel (A/T)  
16吋合金輪圈(自動波)



16" steel wheel (MT)  
16吋錢鋼鑄輪圈(棍波)

## Spacious interior 舒適寬敞的車廂空間



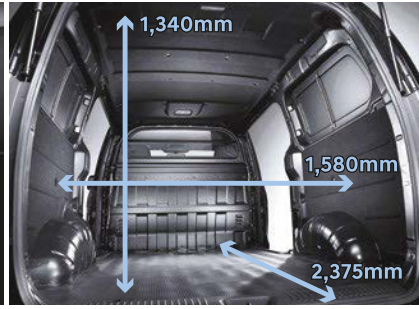
Anything is possible with H-1, whether it's carrying lots of cargo or lots of passengers, or a combination of both, the vehicle is equipped to handle every trip.  
H-1 提供無限可能性，無論是載貨或載客，公私兩用都能勝任。



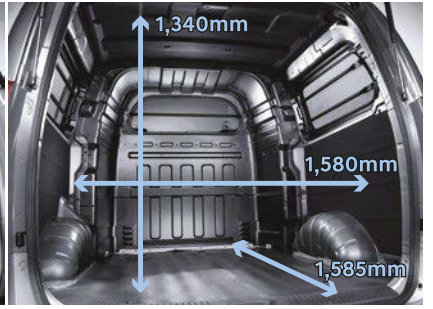
# Move it your way 隨心而行



3-seater cargo space  
3 座位載貨空間



3-seater passenger/cargo space partition  
3 座位隔貨屏



6-seater cargo space  
6 座位載貨空間

# Feel it under the pedal 動力隨傳隨到



High power delivery makes your day easier by increasing work efficiency  
強勁動力輸出令日常工作更有效率



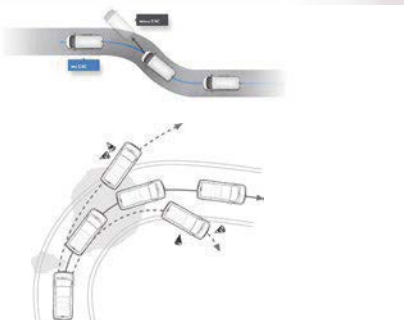
Equipped with 5-speed +/- automatic or 6-speed manual transmission  
可選擇5前速 +/- 自動波或6前速棍波

# Safety 安全性



The semi-bonneted design, provides a safer, quieter and more comfortable drive compared to a regular van.  
半引擎蓋設計比一般客貨車提供更安全及寧靜舒適的駕駛體驗。

ESC



Electronic Stability Control (ESC) keeps the vehicle in the desired path by maintaining balance.  
電子穩定控制系統有效地保持車輛行車方向穩定性。



4-wheel disc brakes enhance cooling capacity to ensure a safer journey.  
4 輪碟式制動系統提供穩定制動力，令每段旅程更加安全。

# Features 設備



8" touchscreen multimedia system with Bluetooth connectivity  
8 吋輕觸式屏幕連藍芽



Electric folding mirrors  
電動摺合倒後鏡



Foldable Key  
摺合車匙

## 車身顏色 Exterior colours



豐盈白  
Creamy White (YAC)



極緻銀  
Hyper Metallic Silver (P2S)



月光藍  
Moonlight Cloud (UB7)



針葉啡  
Taiga Brown (RN7)

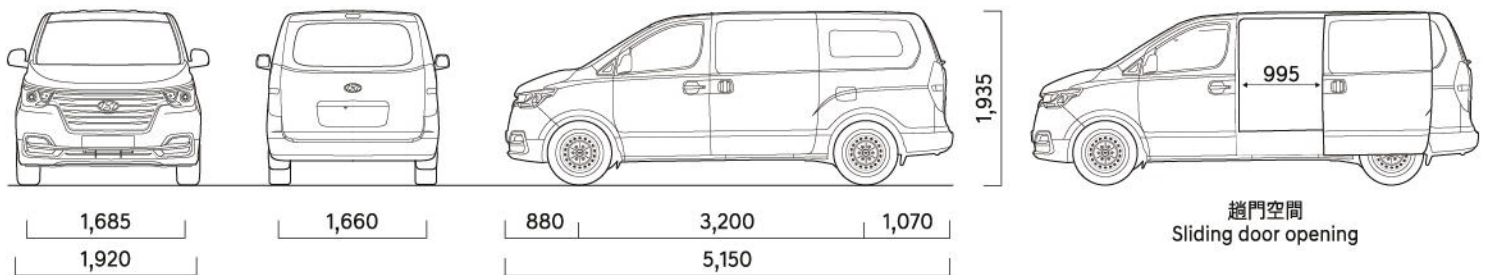


動感黃  
Dynamic Yellow (NFA)



經典黑  
Timeless Black (RB5)

## 尺寸 Dimension (mm)



\*以實物為準 Images are for reference only. Actual product may vary.

## 規格表 Specifications

引擎 ENGINE		
類型 Model	焂波 Manual	自動波 Automatic
排氣量 Displacement (cc)	2,497	
缸徑X衝程 Bore X Stroke (mm)	91.0 x 96.0	
壓縮比 Compression Ratio	15.8	
最大馬力 Max. Power (ps/rpm)	136/ 3,600	170/ 3,600
最大扭力 Max. Torque (kg.m/rpm)	35/ 1,500-2,500	45/ 2,000-2,250
傳動系統 DRIVE TRAIN		
變速箱 Transmission	6 前速焂波 6-Speed Manual	5 前速+/-自動波 5-Speed +/- Automatic
齒輪比 Gear Ratio	第 1 檔 1st 4.489	3.730
	第 2 檔 2nd 2.337	2.308
	第 3 檔 3rd 1.350	1.519
	第 4 檔 4th 1.000	1.000
	第 5 檔 5th 0.784	0.840
	第 6 檔 6th 0.679	/
尾牙齒輪比 Final Gear Ratio	3.692	2.929

懸掛系統 SUSPENSION		
類型 Type	輕型貨車 Cargo Van	
懸掛系統 Suspension	前 Front	麥花臣式支柱 McPherson Strut Type
	後 Rear	硬式驅動軸配葉片彈簧 Leaf Spring with Rigid Axle

轉向系統 STEERING WHEEL		
類型 Type	動力輔助天梯牙 Hydraulic Power Assisted, Rack & Pinion	
總轉向變速齒輪比 Overall Steering Gear Ratio	15.61	
轉向齒輪 Steering Wheel Turn (lock to lock)	3.57	
最小迴旋半徑 Minimum Turning Radius (m)	5.61	

制動系統 BRAKES	
一般 General	液壓式動力輔助制動系統 Hydraulic Power Assisted Braking System with Pressure Proportioning Valve
前制車系統 Front Brake Type	16" 通風碟 16-inch Ventilated Disc
後制車系統 Rear Brake Type	16" 通風碟 16-inch Ventilated Disc

重量 WEIGHT		
整車重量 Curb Weight (kg)	焂波 Maunl	自動波 Automatic
	2,054 - 2,160	2,083-2,189
車輛總重 Gross Vehicle Weight (kg)	3,250	

\* 本公司保留改變規格及設備的最終權利，恕不另行通知  
Hyundai Motor Company and Hyundai Hong Kong Co. Limited reserve the right to change specifications and equipment without prior notice

本小冊子內容部份設備或非標準配備，原廠保用並不包括例行檢查費用。

Some of the equipment illustrated in this catalogue may not be supplied as standard equipment. Cost of regular maintenance services is not included in the warranty.

陳列室 Showroom 九龍九龍灣常悅道1號B恩浩國際中心地下1號舖  
Shop1, G/F, YHC Tower, 1B Sheung Yuet Road, Kowloon Bay, Kowloon

☎ 3428 8288

維修中心 Service Center 新界葵涌和宜合道 26-30 號 1樓 (雍雅軒對面)  
1/F, 26-30 Wo Yi Hop Road, Kwai Chung, N.T.

☎ 3421 0640

新界元朗天水圍, 橋昌路, 橋頭圍 DD124 & 127 (橋昌路入)  
DD124 & 127, Kiu Tau Wai, Kiu Cheong Road, Tin Shui Wai, Yuen Long, N.T. (Entrance at Kiu Cheong Road)

☎ 3105 3828

